



Focus on making intelligent control motors with dedication

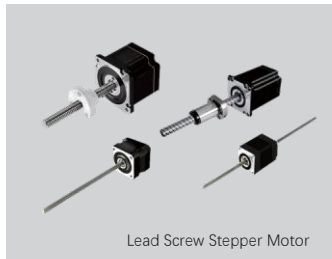
Pioneer of brushless DC/AC servo motors and control



Product Brochure



Integrated Low Voltage DC Servo Motor



Lead Screw Stepper Motor



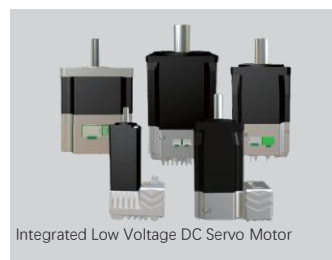
Integrated Low Voltage DC Servo Motor



Integrated Low Voltage Servo Motor



Stepper Motor + Driver Kit



Integrated Low Voltage DC Servo Motor



Separated Low Voltage DC Servo Motor



Integrated Low Voltage DC Servo Motor



Shanghai Siheng Motor Co., Ltd.

- ✓ Shanghai Siheng Motor Co., Ltd. was established in 2013. The company is committed to scientific research, development, production, and sales in the field of motor drive control. We focus on providing high-performance servo motor drive control systems for industrial users and achieving domestic substitution in the field of industrial servo motors. Our product range covers general-purpose AC servo motors with power ratings from 0.1KW to 50KW and voltage ranges of 110V/220V/380V; low-voltage DC servo motors with power ratings from 33W to 20KW and voltage ranges from 24V to 96V; and brushless DC motors with power ratings from 30W to 7.5KW and voltage ranges from 24V-220V, stepper motor and driver series from 20 series to 130 series.

Core Advantages:

- ✓ Motors and drivers are 100% independently researched, developed, and produced with core technology.
- ✓ The low-voltage servo product line is the most comprehensive in China, fully covering general-purpose servo/stepper/brushless products.
- ✓ With over 50 patents, it has been certified as a high-tech enterprise and a "Little Giant," and holds ISO9001 certification.
- ✓ The core team has more than 5-10 years of experience and a deep understanding of the needs of various industries.
- ✓ Successfully applied in AGV, logistics, medical, photovoltaic and transit fields.

Comprehensive full-stack self-developed products with strong and extensive technology

✓ Wide Applications

Company Display

Company environment display



Office Area



Motor Workshop



Aging Test Bench



Driver Workshop



SMT placement production line



Warehouse

Multiple Patent Certificates

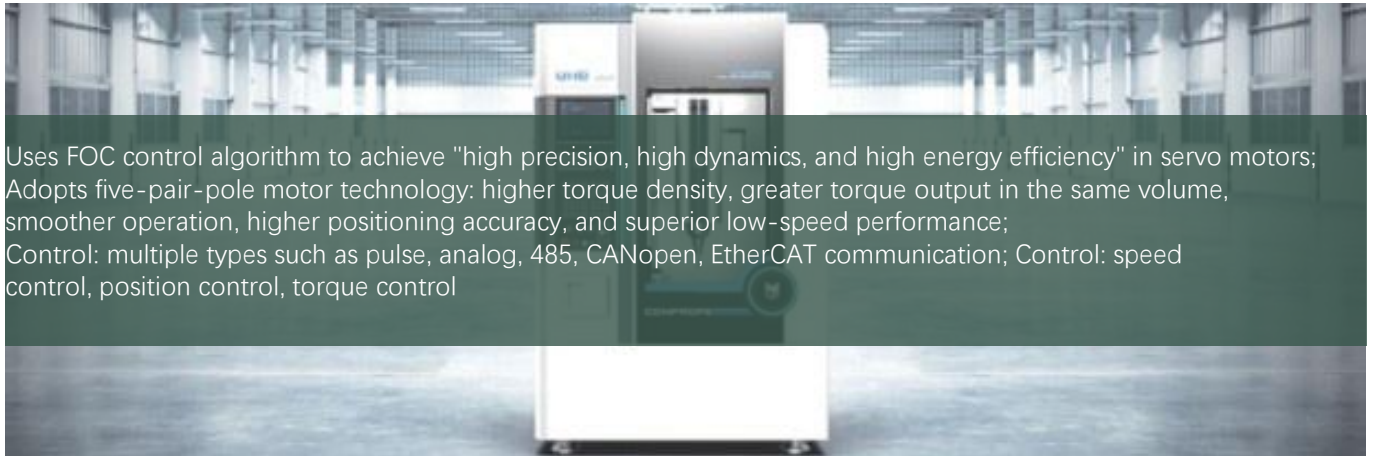
CE Certification / ISO9001 Management System Certification
Utility Model Patent Certificate / Computer Software Copyright Registration Certificate



Contents

◆	AC Servo Motor and Drive Control System	
	Five-pole-pair AC Servo Motor	01
	AC Servo Driver	02
◆	DC Servo Motor and Drive Control System	
	Separated Low-voltage Servo Motor	03
	Separated Low-voltage Servo Driver	04
	Integrated Low-voltage Servo Motor	05
	Integrated Low-voltage Brushless Servo Motor	06
	Low-voltage Lead Screw Servo Motor	07
	Low-voltage Gear Reduction Servo Motor	08
◆	Stepper Motor and Drive Control System	
	Open-loop Stepper Motor Kits	10
	17-bit Single/Multiturn Absolute Encoder Closed-loop Stepper Motor	11
	Closed-loop Stepper Driver	12
	17-bit Single/Multiturn Absolute Encoder Integrated Closed-loop Stepper Motor	13
	Lead Screw Stepper Motor	14
◆	Brushless Motor and Drive Control System	
	Brushless Hollow Cup Motor	15
	Brushless Hollow Cup Gear Motor/Driver	16
	Integrated Brushless Permanent Magnet Synchronous Inverter Motor	17
	Separated Brushless Permanent Magnet Synchronous Inverter Motor	18
	Brushless Permanent Magnet Synchronous Inverter Motor Driver	19
◆	Integrated Servo Driving Wheel	
	MD120AIS Series Servo Integrated Travel Wheel	20
	MD165/180AIS Series Servo Integrated Travel Wheel	21

Five-pair-pole AC servo motor



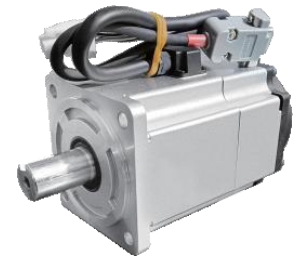
Uses FOC control algorithm to achieve "high precision, high dynamics, and high energy efficiency" in servo motors; Adopts five-pair-pole motor technology: higher torque density, greater torque output in the same volume, smoother operation, higher positioning accuracy, and superior low-speed performance; Control: multiple types such as pulse, analog, 485, CANopen, EtherCAT communication; Control: speed control, position control, torque control



40BST Series AC (Brake) Servo Motor
 Rated voltage: 220V
 Rated power: 100W
 Rated torque: 0.33N
 Compatible driver: D-AIS22020A



60BST Series AC (Brake) Servo Motor
 Rated voltage: 220V
 Rated power: 200W/400W/600W
 Rated torque: 0.64N/1.27N
 Compatible driver: D-AIS22020B



80BST Series AC (Brake) Servo Motor
 Rated voltage: 220V
 Rated power: 750W/1KW
 Rated torque: 2.4N/3.5N
 Compatible driver: D-AIS22020C



130BST Series AC (Brake) Servo Motor
 Rated voltage: 220V
 Rated power: 1/1.3/1.8/2/2.3/2.6/3.1/3.8/4kW
 Rated torque: 6.4N/8.4N/9.6N/11.5N/14.6N
 Compatible driver: D-AIS22030A



130BST Series AC (Brake) Servo Motor
 Rated voltage: 380V
 Rated power: 1/1.3/1.8/2/2.3/2.6/3.1/4kW
 Rated torque: 6.4N/8.4N/9.6N/11.5N/14.6N
 Compatible driver: D-AIS38035A



180BST Series AC (Brake) Servo Motor
 Rated voltage: 220V/380V
 Rated power: 2.9/4.5kW/5.5kW/5.8kW/7.5kW
 Rated torque: 18.6N/28.4N/35N/48N
 Compatible driver: D-AIS22050A/D-AIS38050A

AC servo driver



D-AIS22020A AC Servo Drive
 Input Power: 220V
 Module Current: 20A
 Compatible motors: 40/60/80 series
 Position control / Speed control / Torque control / Communication control pulse / Analog signal / 485 / CANopen / EtherCAT



D-AIS22030A AC Servo Drive
 Input Power: 220V
 Module Current: 30A
 Compatible motors: 110/130 series
 Position control / Speed control / Torque control / Communication control pulse / Analog signal / 485 / CANopen / EtherCAT



D-AIS22050A AC Servo Drive
 Input Power: 220V
 Module Current: 50A
 Compatible motors: 130 series
 Position control / Speed control / Torque control / Communication control pulse / Analog signal / 485 / CANopen / EtherCAT



D-AIS38035A AC Servo Drive
 Input Power: 380V
 Module Current: 35A
 Compatible motors: 110/130 series
 Position control / Speed control / Torque control / Communication control pulse / Analog signal / 485 / CANopen / EtherCAT



D-AIS38050A AC Servo Drive
 Input Power: 380V
 Module Current: 50A
 Compatible motors: 110/130 series
 Position control / Speed control / Torque control / Communication control pulse / Analog signal / 485 / CANopen / EtherCAT



D-AIS380100A AC Servo Drive
 Input Power: 380V
 Module Current: 100A
 Compatible motors: 180/200/230 series
 Position control / Speed control / Torque control / Communication control pulse / Analog signal / 485 / CANopen / EtherCAT

Split-type Low Voltage Servo Motor

It is available in two specifications: integrated motor drive and separate motor drive, to meet the needs of different scenarios. The FOC control algorithm is adopted to achieve “high precision, high dynamics, and high energy efficiency” for the servo motor.

Adopts 5-pole pair motor technology: higher torque density, larger output torque for the same volume, smoother operation, higher positional accuracy, and superior low-speed performance.

Control: pulse, analog, 485, CANopen, EtherCAT communication and various other control modes; Control: speed control, position control, torque control



28 Series DC (Brake) Servo Motor

Rated voltage: 24-48V
 Rated Power: 33W
 Rated Torque: 0.105N
 Compatible Driver: D-AIS48008A



40 Series DC (Brake) Servo Motor

Rated voltage: 24-48V
 Rated Power: 100W
 Rated Torque: 0.32N
 Compatible Driver: D-AIS48015A



60 Series DC (Brake) Servo Motor

Rated voltage: 24~48V
 Rated Power: 200/400W
 Rated Torque: 0.64/1.27N
 Compatible Driver: D-AIS48015A



80 Series DC (Brake) Servo Motor

Rated voltage: 24-80V
 Rated Power: 0.75/1KW
 Rated Torque: 2.4/3.5N
 Compatible Driver: D-AIS48025A



110 Series DC (Brake) Servo Motor

Rated voltage: 24~80V
 Rated Power: 1.5/1.8KW
 Rated Torque: 5/6N
 Compatible Driver: D-AIS48050A



130 Series DC (Brake) Servo Motor

Rated voltage: 24~80V
 Rated Power: 1/1.3/1.8/2/2.3/2.6/3.1/4KW
 Rated Torque: 6.4/8.4/9.6/11.5/14.6N
 Compatible Driver: D-AIS48050A



180 Series DC (Brake) Servo Motor

Rated voltage: 48~72V
 Rated Power: 2.9/4.5/5.5/5.8/7.5KW
 Rated torque: 18.6/28.4/35/48N;
 Compatible driver: D-AIS72100A



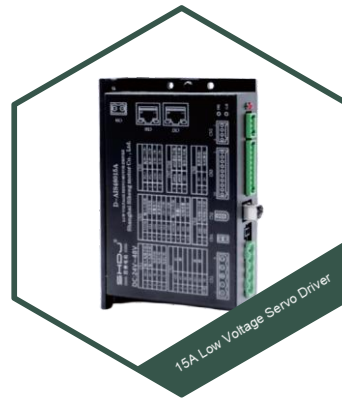
220 Series DC (Brake) Servo Motor

Rated voltage: 96V
 Rated Power: 11/15/20KW
 Rated Torque: 70/95.5/127N
 Compatible Driver: D-AIS72200A

Split-type low-voltage servo driver



8A Low Voltage Servo Driver
 Rated Current: 8A Voltage Range:
 24V~36V
 Position control, speed control, torque
 control, communication control
 Pulse/Analog/485/CANopen/EtherCAT



15A Low Voltage Servo Driver
 Rated Current: 15A Voltage Range:
 24V~48V
 Position control, speed control, torque
 control, communication control
 Pulse/Analog/485/CANopen/EtherCAT



25A Low Voltage Servo Driver
 Rated Current: 25A Voltage
 Range: 24V~60V
 Position control, speed control, torque
 control, communication control



50A Low Voltage Servo Driver
 Rated Current: 50A Voltage
 Range: 24V~72V
 Position control, speed control, torque
 control, communication control
 Pulse/Analog/485/CANopen/EtherCAT



100A Low Voltage Servo Driver
 Rated Current: 100A Voltage
 Range: 48V~72V
 Position control, speed control, torque
 control, communication control
 Pulse/Analog/485/CANopen/EtherCAT



200A Low Voltage Servo Driver
 Rated Current: 200A Voltage Range:
 48V~96V
 Position control, speed control, torque
 control, communication control
 Pulse/Analog/485/CANopen/EtherCAT



300A Low Voltage Servo Driver
 Rated Current: 300A Voltage Range: 48V~96V
 Position control, speed control, torque
 control, communication control
 Pulse/Analog/485/CANopen/EtherCAT

Integrated Low-Voltage Servo Motor

The integrated low-voltage servo motor, through the all-in-one design of the motor and the driver, breaks the traditional "motor + external driver" split structure, fundamentally solving the problems of limited installation space and complicated wiring, and provides an efficient motion control solution for compact working conditions.

1. Core Advantages: Extremely compact structure, ultra-simplified and efficient wiring. 2. Power Range: 33W~400W~1KW~3KW, supports multiple control types including 485/analog/CANopen/EtherCAT. 3. Diverse Installation Specifications: Backpack type/Side backpack type/Plug-in type/Direct-cable type, suitable for different working conditions and layouts.



60 Series Backpack-Type DC (Brake) Servo Motor
 Rated voltage: 48V
 Rated power: 400W
 Rated torque: 1.27Nm
 Rated speed: 3000rpm



80 Series Backpack-Type DC (Brake) Servo Motor
 Rated voltage: 48V
 Rated power: 750W
 Rated torque: 2.4Nm
 Rated speed: 3000rpm



40 Series DC (Brake) Servo Motor
 Rated voltage: 24V
 Rated power: 100W
 Rated torque: 0.32Nm
 Rated speed: 3000rpm



57 Series DC (Brake) Servo Motor
 Rated voltage: 24V
 Rated power: 32/60/85W
 Rated torque: 0.48/0.63/1.45Nm
 Rated speed: 3000rpm



60 Series DC (Brake) Servo Motor
 Rated voltage: 24/48V
 Rated power: 200/400W
 Rated torque: 0.64/1.27Nm
 Rated speed: 3000rpm



80 Series DC (Brake) Servo Motor
 Rated voltage: 48/72V
 Rated power: 750/1000W
 Rated torque: 2.4/3.2Nm
 Rated speed: 3000rpm



60 Series
 Direct-Output Wire DC (Brake) Servo Motor
 Rated voltage: 24/48V
 Rated power: 200/400W
 Rated torque: 0.64/1.27Nm
 Rated speed: 3000rpm

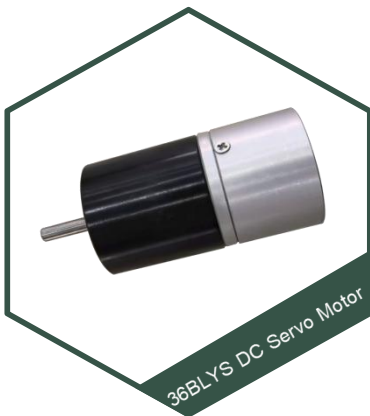


80 Series
 Direct-Output Wire DC (Brake) Servo Motor
 Rated voltage: 48V
 Rated power: 750W
 Rated torque: 2.4Nm
 Rated speed: 3000rpm



130 Series
 Direct-Output Wire DC Servo Motor
 Rated voltage: 48V
 Rated power: 1600/1800/2000W
 Rated torque: 7.5/6/9.6Nm
 Rated speed: 2000/3000rpm

Integrated Low-Voltage Brushless Servo Motor



36BLYS Series DC Servo Motor

Rated voltage: 24V
 Rated power: 31.5w
 Rated torque: 0.075Nm
 Rated speed: 4000rpm



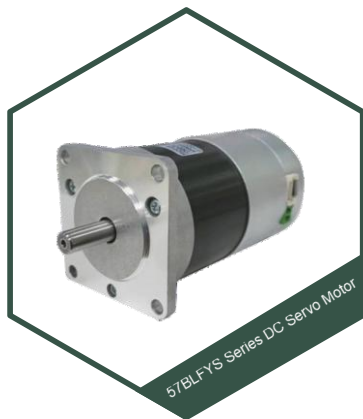
42BLFYs Series DC Servo Motor

Rated voltage: 24V
 Rated power: 31/62/94w
 Rated torque: 0.1/0.2/0.3Nm
 Rated speed: 3000rpm



42BLS DC Servo Motor

Rated voltage: 24V
 Rated power: 33/50/46w
 Rated torque: 0.08/0.12/0.11Nm
 Rated speed: 3000rpm



57BLFYs Series DC Servo Motor

Rated voltage: 24V
 Rated power: 50/100/150/200w
 Rated torque: 0.16/0.32/0.48/0.64Nm
 Rated speed: 3000rpm



57BLS Series DC Servo Motor

Rated voltage: 24V
 Rated power: 62/126/188w
 Rated torque: 0.2/0.4/0.6Nm
 Rated speed: 3000rpm

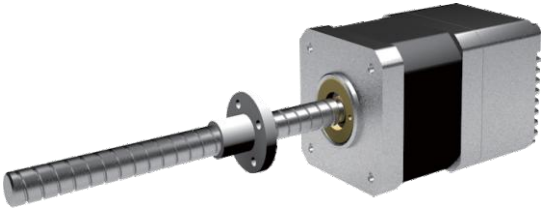


86BLS Series DC Servo Motor

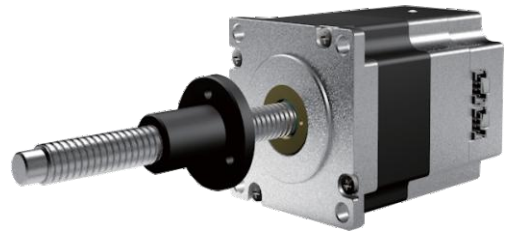
Rated voltage: 48V
 Rated power: 110/220/440w
 Rated torque: 0.7/1.4Nm
 Rated speed: 1500/3000rpm

Low-voltage lead screw servo motor

The low-voltage leadscrew servo motor adopts an integrated design of “servo motor + leadscrew”, which not only realizes the basic advantages of “torque amplification” and “direct drive”, but also achieves synergistic gains in terms of precision control, scenario adaptability, and operational stability. 1. Efficient power transmission: the leadscrew amplifies the motor torque, enabling a low-power motor to drive heavy loads. You can choose between a ball screw (for high transmission efficiency) or a T-type screw (for self-locking and energy-saving); 2. Excellent control precision: the collaborative effect of servo closed-loop control and leadscrew linear transmission enables micron-level positioning accuracy. Combined with backlash-free transmission and FOC algorithm, smooth operation at low speed is achieved without creeping; 3. Reliable operation and easy maintenance: The integrated design reduces component connection failures; the leadscrew is highly wear-resistant and long-lasting, with maintenance only requiring periodic lubrication. Some models are also equipped with status monitoring, lowering operation and maintenance costs.



42BLS Series DC Servo Screw Rod Motor
 Rated voltage: 24V
 Rated Power: 31/62/94W
 Screw Rod Diameter: 6.35/8mm
 Lead screw pitch:
 1.27/2.54/3.175/5.08/6.35/9.75/12.7mm



57BLS Series DC Servo Screw Rod Motor
 Rated voltage: 24V
 Rated Power: 62/126/188W
 Screw Rod Diameter: 9.525/10mm
 Lead Screw Pitch:
 1.27/2.54/3.175/5.08/6.35/9.525/12.7/25.4mm



60AIS Series DC Servo Screw Rod Motor
 Rated voltage: 24/48V
 Rated Power: 31/62/94W
 Screw Rod Diameter: 14/15.875mm
 Lead Screw Pitch: 2/3/4/6/10/12/18mm
 2.54/3.175/5.08/12.7/25.4mm



80AIS Series DC Servo Screw Rod Motor
 Rated voltage: 48V
 Rated Power: 750/1000W
 Screw Rod Diameter: 16/20mm
 Lead Screw Pitch: 2/4/5/10/16/25mm

Low-voltage reduction servo motor



The solution of servo motor plus gearbox greatly amplifies output torque via the gearbox, allowing a low-power motor to drive heavy loads. It can also be paired with various gearboxes such as planetary, worm-and-worm, or helical types to adapt to different scenarios. This setup ensures both high-precision transmission and stable operation, while offering flexible installation to meet requirements for complex working conditions.



Eccentric shaft reduction motor

Eccentric shaft reduction motor

Motor specifications: 60/90 series | Integrated type
 Rated speed: 3000, Speed: 4000; Gear ratio: 30/50/60/90/100/120/150, etc.



Hypoid right-angle reduction motor

Hypoid right-angle reduction motor

Motor specifications: 60/90 series | Integrated type
 Rated speed: 3000, Speed: 4000; Gear ratio: 30/50/60/90/100/120/150, etc.



Parallel shaft reduction motor

Parallel shaft reduction motor

Motor specifications: 60/90 series | Integrated type
 Rated speed: 3000, Speed: 4000; Gear ratio: 30/50/60/90/100/120/150, etc.



42 brushless DC reduction motor

42 brushless DC reduction motor

Rated voltage: 24V
 Gear ratio: First stage: 4/5/7/10
 Second stage:
 16/20/25/28/35/40/50/70



57 brushless DC reduction motor

57 brushless DC reduction motor

Rated voltage: 24V
 Gear ratio: First stage: 4/5/7/10
 Second stage:
 16/20/25/28/35/40/50/70

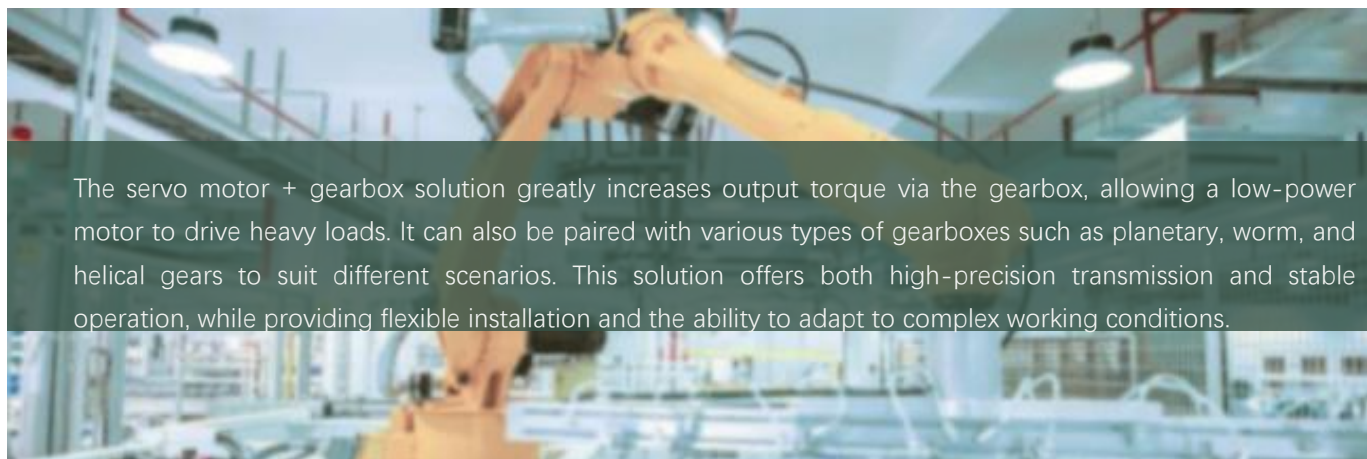


86 brushless DC reduction motor

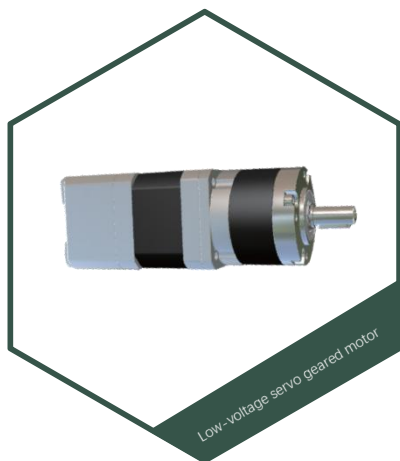
86 brushless DC reduction motor

Rated voltage: 48V/220V Reduction ratio: First stage: 4/5/7/10
 Second stage:
 16/20/25/28/35/40/50/70;
 64/80/100/125/140/175/200

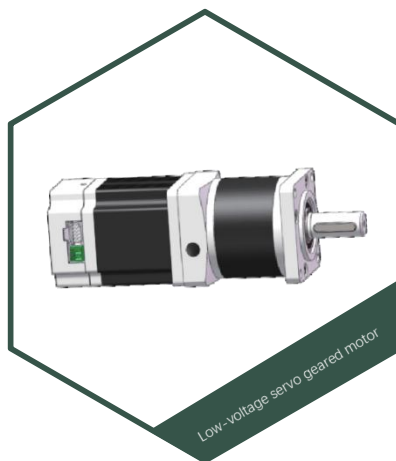
Low-voltage geared servo motor



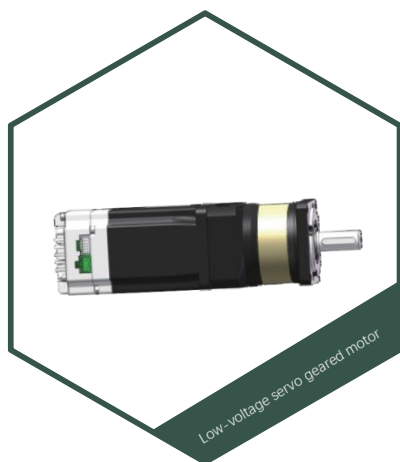
The servo motor + gearbox solution greatly increases output torque via the gearbox, allowing a low-power motor to drive heavy loads. It can also be paired with various types of gearboxes such as planetary, worm, and helical gears to suit different scenarios. This solution offers both high-precision transmission and stable operation, while providing flexible installation and the ability to adapt to complex working conditions.



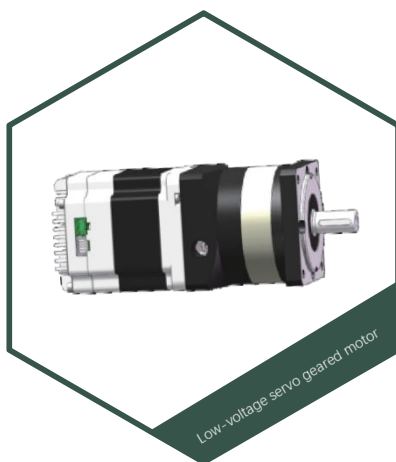
MD42BLS-AG Series
 Rated Voltage: 24V
 Rated Power: 31W/62W/94W
 Reduction Ratio:
 Single/Double Stage



MD57AIS-AG Series
 Rated Voltage: 24V
 Rated Power: 32W/60W/85W
 Reduction ratio: single-
 stage/double-stage



MD60AIS-AG Series
 Rated Voltage: 24V/48V
 Rated Power: 200W/400W
 Reduction Ratio:
 Single/Double Stage



MD80AIS-AG Series
 Rated Voltage: 48V/72V
 Rated Power: 750W/1000W
 Reduction Ratio:
 Single/Double Stage



MD86BLS-AG Series
 Rated Voltage: 48V
 Rated Power: 110W/220W/440W
 Reduction Ratio: Single/Double
 Stage

Open Loop Stepper Motor Set



20 Series Stepper Motor Kit

Rated voltage: 2.6/4.4/4.8/6/7.2/8.1V
 Rated current: 0.2/0.4/0.6A
 Torque: 0.01/0.016/0.02/0.04/0.048Nm
 Compatible driver: SH-215C/DSP42



28 Series Stepper Motor Kit

Rated voltage: 2.66/3.2/3.8/4.4/4.6/6.2V
 Rated current: 0.67/0.95A
 Torque: 0.043/0.075/0.095/0.09/0.12Nm
 Compatible driver: SH-215C/DSP42



35 Series Stepper Motor Kit

Rated voltage: 2.7/3.2/3.8/10V
 Rated current: 0.4/0.5/0.75/0.8/1.2/1.4A
 Torque: 0.05/0.08/0.1/0.12/0.14Nm
 Compatible driver: SH-215C/DSP42



39 Series Stepper Motor Kit

Rated voltage: 2.4/9/12V
 Rated current: 0.16/0.3/0.4/0.6A
 Torque: 0.065/0.08/0.11/0.13/0.2/
 0.21/0.22/0.28/0.29Nm
 Compatible driver: SH-215C/DSP42



42 Series Stepper Motor Kit

Rated voltage: 4/6/12V
 Rated current: 0.4/0.8/0.95A
 Torque: 0.6/0.22/0.259/0.36/0.317/
 0.44/0.5/0.6/0.65Nm
 Compatible driver: SH-215C/DSP42



57 Series Stepper Motor Kit

Rated voltage: 4/6/12V
 Rated current: 0.4/0.8/0.95A
 Torque: 0.6/0.65/0.8/1/1.2/2/2.8/3.2Nm
 Compatible driver: DM542/DSP57



60 Series Stepper Motor Kit

Rated voltage: 2.4/3.6/3.9/4.5V
 Rated current: 2/3A
 Torque: 1.5/2.5/3/3.5Nm
 Compatible driver: DSP57/DSP560



86 Series Stepper Motor Kit

Rated voltage: 3.3/4.5/5.1/6.4/6.9V
 Rated current: 2/4A
 Torque: 2.8/4.4/6.5/8.4/12Nm
 Compatible driver: DSP86/DMA860H



110 Series Stepper Motor Kit

Rated voltage: 3.9/4V
 Rated current: 4/9A
 Torque: 13/22/28Nm
 Compatible Driver: DSP-22208

17-bit Single/Multiturn Absolute Encoder Closed-Loop Stepper Motor

The closed-loop stepper motor drive system uses a software architecture derived from servo motor drive systems and is equipped with the latest FOC control algorithm, offering servo-level performance: it supports 16 position segments, 16 speed segments, and 16 homing methods, providing comprehensive functionality. Configurable 17-bit multiturn absolute encoder for higher positioning accuracy; The communication interface is flexible. The motor and driver support 485 connection and are also compatible with CANopen/EtherCAT, meeting control requirements in various scenarios.



28 Series Closed-Loop Stepper Motor Kit

Rated voltage: 3.92/4.76/6.44V
Rated current: 0.7A
Maximum static torque:
0.06/0.08/0.12 Nm;
Compatible driver: AiBH2-4805C



42 Series Closed-Loop Stepper Motor Kit

Rated voltage: 3/3.4/4V
Rated current:
1.5/1.7/2.0A Torque:
0.2/0.5/0.7Nm



57 Series Closed-Loop Stepper Motor Kit

Rated voltage:1.8/2.4/3V
Rated current: 3/4/5A
Torque: 1/2/3 Nm
Compatible driver: AiBH2-4810C



60 Series Closed-Loop Stepper Motor Kit

Rated voltage: 1.5/2.4/2.8V
Rated current: 3/4A
Torque: 1.5/2/3 Nm
Compatible driver: AiBH2-4810C



86 Series Closed-Loop Stepper Motor Kit

Rated voltage:3/3.6V
Rated current: 6A
Torque: 4.2/8.2/12 Nm
Compatible driver: AiBH2-48010C



110 Series Closed-Loop Stepper Motor Kit

Rated voltage:
6/10.2V Rated current:
5/6A
Torque: 16/28 Nm
Compatible driver: AiBH2-22020C

Closed-loop stepper driver



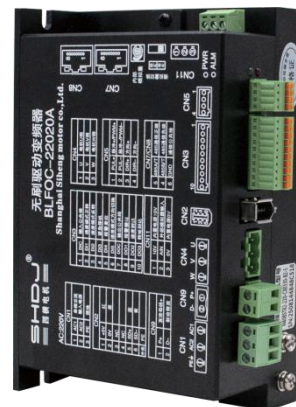
Driver AiBH2-4805C
 Voltage output range: 24-48V
 Rated current: 5A
 Compatible motors: 20/28/42/57/60 series three-phase closed-loop stepper motors
 Communication: RS485/CANopen/EtherCAT



Driver AiBH2-4810C
 Voltage output range: 24-48V
 Rated current: 10A
 Compatible motors: 86/110/130 series three-phase closed-loop stepper motors
 Communication: RS485/CANopen/EtherCAT



Driver AiBH2-4820E
 Voltage output range: 24-48V
 Rated current: 10A
 Compatible Motors: 86/110/130 Series Three-phase Closed-loop Stepper Motor
 EtherCAT Bus Type
 Communication: RS485/CANopen/EtherCAT



Driver: D-BLFOC22020A
 Voltage output range: 220V
 Rated current: 20A
 Compatible motors: 86/110/130 series three-phase closed-loop stepper motors
 Communication: RS485/CANopen/EtherCAT

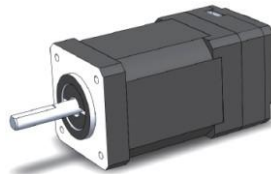
17-bit Single/Multi-turn Absolute Encoder Integrated Closed-Loop Stepper Motor

The integrated closed-loop stepper motor features a design that combines the motor and driver into one unit, resulting in a more compact structure and simpler wiring. At the same time, it inherits the core advantages of closed-loop stepper motors: utilizing servo-derived software architecture and the latest FOC control algorithm, it offers servo-level performance, supports 16 position segments, 16 speed levels, and 16 homing modes, providing comprehensive functionality. It can be configured with a 17-bit multi-turn absolute encoder for superior positioning accuracy. The communication interfaces are flexible, supporting 485 connection as well as CANopen/Ethercat, adapting to various control requirements.



28 Series Integrated Stepper Motor

Operating voltage range: 8~40V |
Integrated FOC control: Supports open-loop and closed-loop, electronic gear ratio can be set arbitrarily



35 Series Integrated Stepper Motor

Operating voltage range: 22~40V |
Integrated FOC control: Supports open-loop and closed-loop, electronic gear ratio can be set arbitrarily



42 Series Integrated Stepper Motor

Rated voltage: 24V
Rated current: 1.33/1.68/2.1A
Torque: 0.22/0.3/0.46/0.6Nm



57 Series Integrated Stepper Motor

Rated voltage: 24/48V
Rated current: 3A
Torque: 0.6/1/1.1/2.5Nm



60 Series Integrated Stepper Motor

Rated voltage: 24/48V
Rated current: 4A
Torque: 1.25/2.4/3Nm



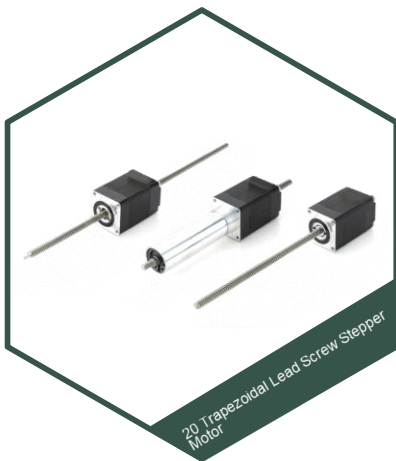
86 Series Integrated Stepper Motor

Rated voltage: 24/48V
Rated current: 1.33/1.68/2.1/3/4/6A
Torque: 0.22/1.6/3/6.2/10.6Nm

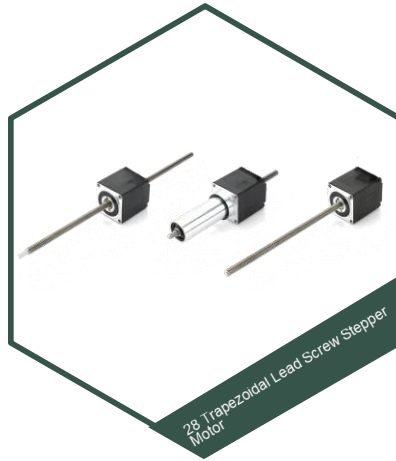
Lead Screw Stepper Motor



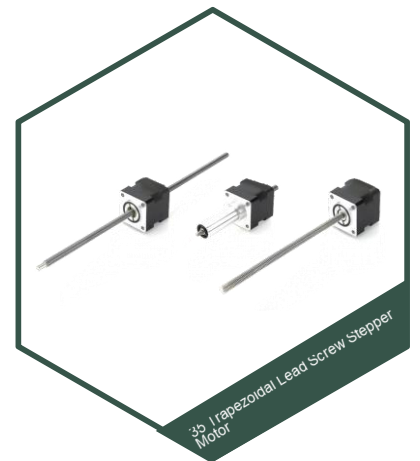
Linear screw stepper motors are suitable for applications requiring precise positioning, fast movement, and long service life. Typical applications include X-Y tables, medical equipment, semiconductor processing, communication devices, modulation valves, printing equipment, environmental protection equipment, automatic robots, 3D printers, and more.



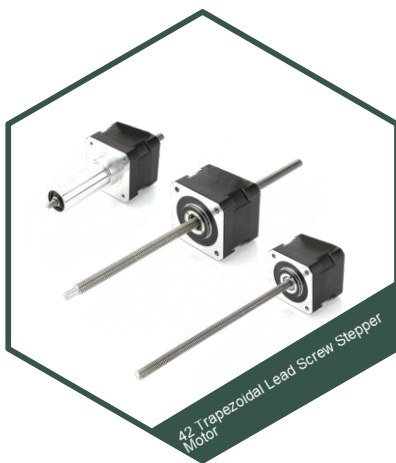
20 hybrid trapezoidal lead screw stepper motor through-shaft type / external drive type / K-type fixed shaft type, lead screw specifications customizable



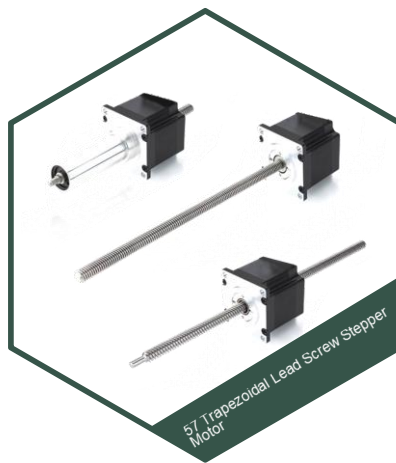
28 hybrid trapezoidal lead screw stepper motor through-shaft type / external drive type / K-type fixed shaft type, lead screw specifications customizable



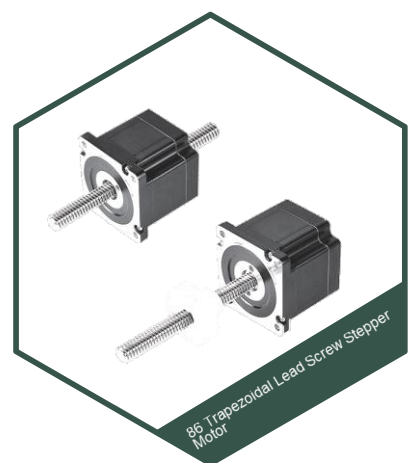
35 hybrid trapezoidal lead screw stepper motor through-shaft type / external drive type / K-type fixed shaft type, lead screw specifications customizable



42 hybrid trapezoidal lead screw stepper motor through-shaft type / external drive type / K-type fixed shaft type, lead screw specifications customizable



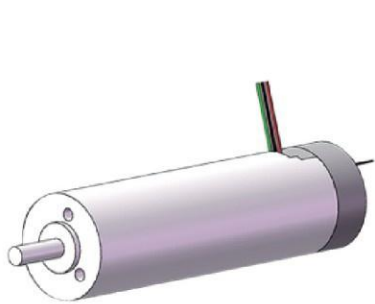
57 hybrid trapezoidal lead screw stepper motor through-shaft type / external drive type / K-type fixed shaft type, lead screw specifications customizable



86 Hybrid Trapezoidal Lead Screw Stepper Motor
Through Shaft Type / External Drive Type Lead Screw Specifications Support Customization

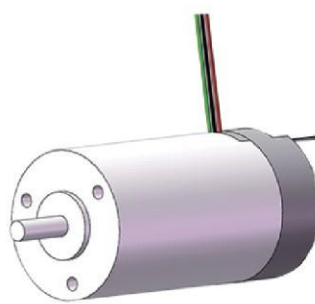
Brushless hollow cup motor

The hollow cup motor features no iron core magnetic resistance loss, resulting in high electric energy conversion efficiency (usually reaching 85%-95%) and lower energy consumption; it has extremely low rotor inertia and ultra-fast dynamic response (start-stop time at the millisecond level), making it suitable for high-frequency forward and reverse rotation scenarios; compact size and lightweight (over 30% lighter than ordinary motors of the same power), saving installation space; operation is free of cogging torque, with minimal torque ripple, low noise, and strong stability; widely used in medical equipment, precision instruments, small robots, and other applications requiring "high efficiency, light weight, and high precision."



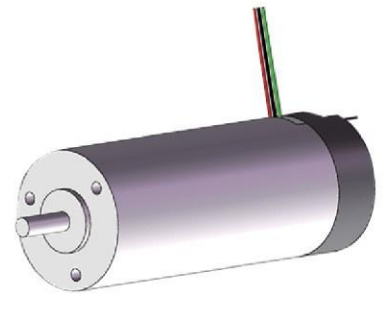
BLK1759 Brushless Hollow Cup Motor

Rated voltage (v): 12 ~ 24
 Output power (W): 8.33 ~ 11.31
 Rated speed (rpm): 8500 ~ 10500



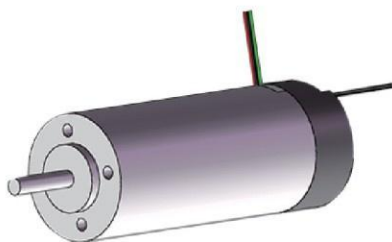
BLK2241 Brushless Hollow Cup Motor

Rated voltage (v): 12/24/36/48
 Power output (W): 8/9. 3/10. 15/10. 1
 8 Rated speed (rpm): 8500/9100/9300



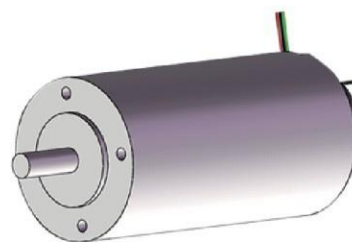
BLK2256 Brushless Hollow Cup Motor

Rated voltage (v): 12/18/24/36/48
 Power output (W): 20.8/22.7/28.2/29.
 3 Rated speed (rpm): 7600/8000/905
 0 10300/11000



BLK3077 Brushless Hollow Cup Motor

Rated voltage (v): 24/36/48
 Power output (W): 47.5/49.9/56.6
 Rated speed (rpm): 6300/6600/7700



BLK4084 Brushless Hollow Cup Motor

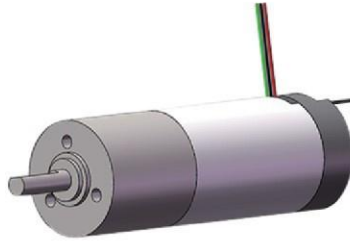
Rated voltage (v): 24 ~ 48
 Output power (W): 155 ~ 166.2
 Rated speed (rpm): 9300 ~ 10290

Brushless Hollow Cup Gear Motor / Driver



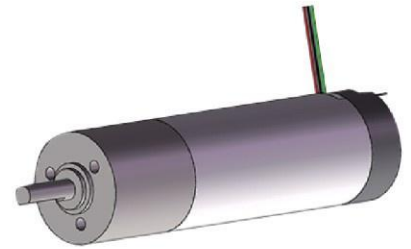
BLK1759-16 Brushless Hollow Cup Reducer Motor

Rated voltage (v): 12 ~ 24
 Output power (W): 8.33 ~ 11.31
 Rated speed (rpm): 8500 ~ 10500
 Reduction ratio: 3.79 ~ 2865



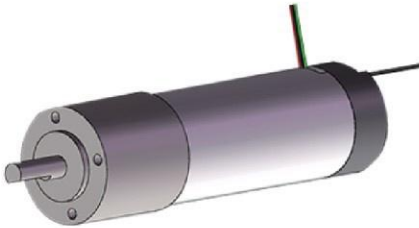
BLK2241-22 Brushless Hollow Cup Reducer Motor

Rated voltage (v): 12/24/36/48
 Output power (W): 8/9.3/10.15/10.18
 Rated speed (rpm): 8500/9100/9300
 Reduction ratio: 3.57 ~ 1257.14



BLK2256-22 Brushless Hollow Cup Reducer Motor

Equivalent voltage (v): 12/18/24/36/48
 Power output (W): 20.8/22.7/28.2/29.3
 Rated speed (rpm): 7600/8000/9050
 Reduction ratio: 3.57 ~ 1257.14



BLK3077-32 Brushless Hollow Cup Reducer Motor

Rated voltage (v): 24/36/48
 Power output (W): 47.5/49.9/56.6
 Rated speed (rpm): 6300/6600/7700
 Reduction ratio: 3.11 ~ 1846.41



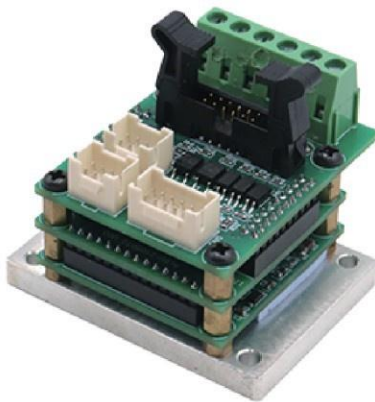
BLK4084-42 Brushless Hollow Cup Reducer Motor

Rated voltage (v): 24 ~ 48
 Output power (W): 155 ~ 166.2
 Rated speed (rpm): 9300 ~ 10290
 Reduction ratio: 3.11 ~ 2123.4



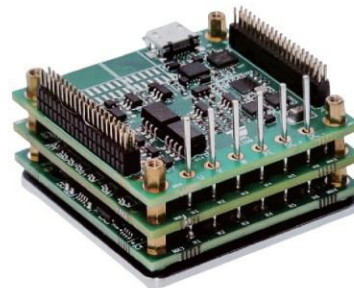
D-AIS24002Z Driver

Output power (W): 2 ~ 50
 Input voltage (V): 24 ~ 36
 Encoder terminal: 8 cores



SDP01-B005CB Drive

Output power (W): 2 ~ 200
 Input voltage (V): 12 ~ 60
 Encoder terminal: 8 ~ 12 cores

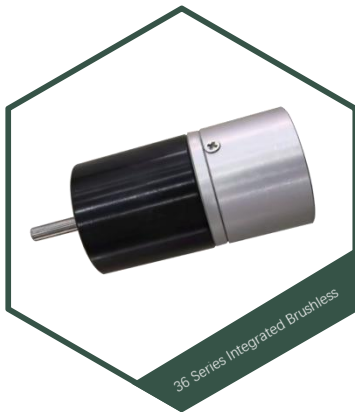


Pin type servo driver

Output power (W): 1 ~ 750
 Input voltage (V): 12 ~ 72

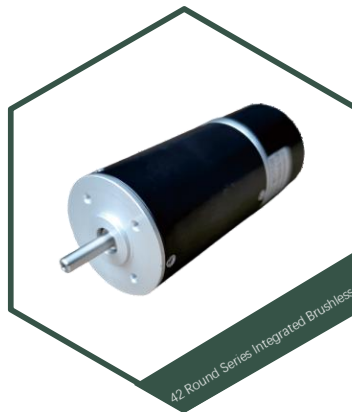
Communication: pulse direction position control, PWM duty cycle speed/current control (CANopen series)

Integrated Brushless Permanent Magnet Synchronous Variable Frequency Motor



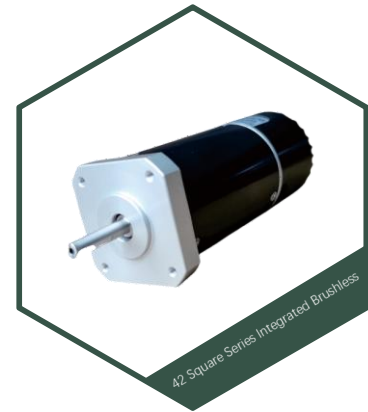
Brushless Permanent Magnet Synchronous Variable Frequency Motor

Rated voltage: 24V
 Rated power: 31.5W
 Rated speed: 4000 rpm/min
 Rated torque: 0.075 Nm



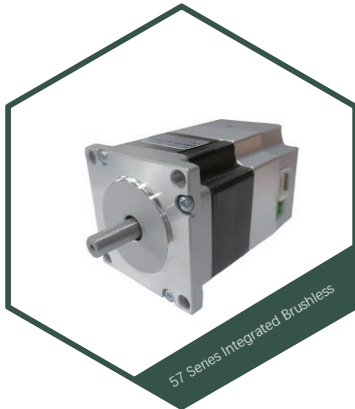
Brushless Permanent Magnet Synchronous Variable Frequency Motor

Rated voltage: 24V
 Rated power: 100W
 Rated speed: 3000 rpm/min
 Rated torque: 0.32 Nm



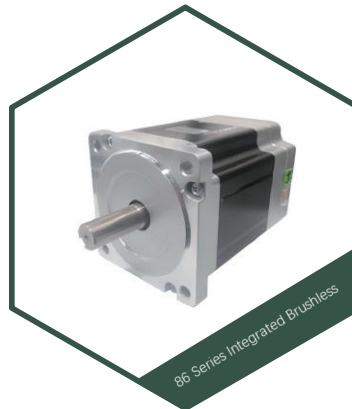
Brushless Permanent Magnet Synchronous Variable Frequency Motor

Rated voltage: 24V
 Rated power: 100W
 Rated speed: 3000 rpm/min
 Rated torque: 0.32 Nm



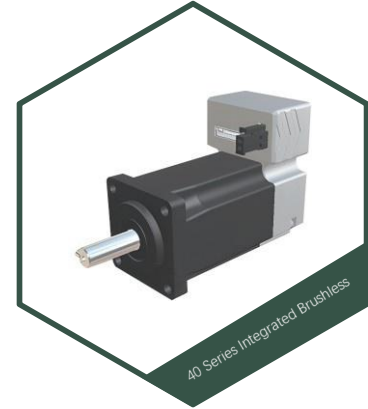
Brushless Permanent Magnet Synchronous Variable Frequency Motor

Rated voltage: 24V
 Rated power: 62/126/188 W
 Rated speed: 3000 rpm/min
 Rated torque: 0.2/0.4/0.6 Nm



Brushless Permanent Magnet Synchronous Variable Frequency Motor

Rated voltage: 48V
 Rated power: 110/220/440 W
 Rated speed: 1500/3000 rpm/min
 Rated torque: 0.7/1.4 Nm



Brushless Permanent Magnet Synchronous Variable Frequency Motor

Rated voltage: 48V
 Rated power: 100W
 Rated speed: 3000 rpm/min
 Rated torque: 0.32 Nm



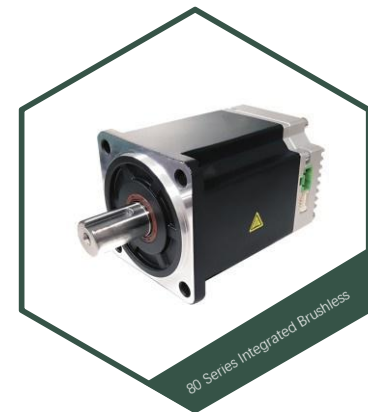
Brushless Permanent Magnet Synchronous Variable Frequency Motor

Rated voltage: 24V
 Rated power: 32/62/85 W
 Rated speed: 1100/1200 rpm/min
 Rated torque: 0.48/0.63/1.45 Nm



Brushless Permanent Magnet Synchronous Variable Frequency Motor

Rated voltage: 24-48V
 Rated power: 200/400W
 Rated speed: 3000 rpm/min
 Rated torque: 0.64/1.27 Nm



Brushless Permanent Magnet Synchronous Variable Frequency Motor

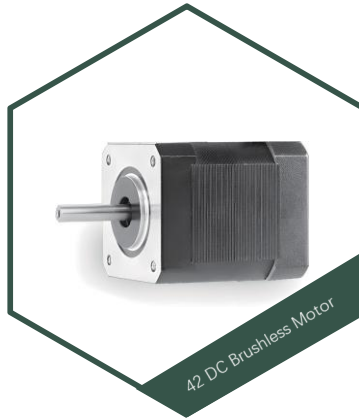
Rated voltage: 48-72V
 Rated power: 750/1000 W
 Rated speed: 3000 rpm/min
 Rated torque: 2.4/3.2 Nm

Split-Type Brushless Permanent Magnet Synchronous Variable Frequency Motor



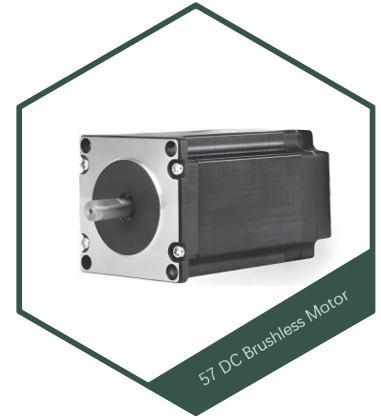
Permanent Magnet Synchronous Variable Frequency Motor

Rated voltage: 12V/24V
 Rated power: 5/8/10/15/20/25 W
 Rated speed: 4000/6000/8000 rpm/min
 Rated torque: 0.012/0.019/0.023/0.024/0.03 Nm



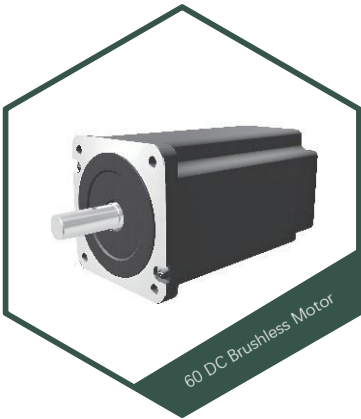
Permanent Magnet Synchronous Variable Frequency Motor

Rated voltage: 24V
 Rated power: 25/35/45/50/70/90 W
 Rated speed: 3000/6000/12000 rpm/min
 Rated torque: 0.08/0.11/0.14 Nm



Permanent Magnet Synchronous Variable Frequency Motor

Rated voltage: 24V/48V
 Rated power: 31/62/94/126/188 W
 Rated speed: 1500/3000/6000 rpm/min
 Rated torque: 0.08/0.11/0.14/0.2/0.6 Nm



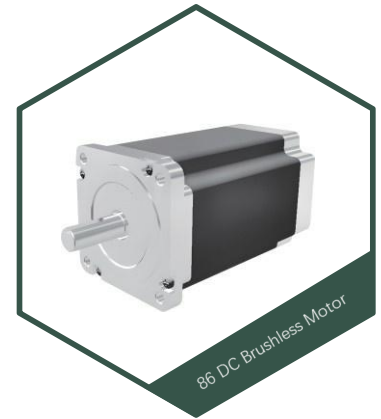
Permanent Magnet Synchronous Variable Frequency Motor

Rated voltage: 24/48V
 Rated power: 50/100/200/300/400 W
 Rated speed: 1500/3000 rpm/min
 Rated torque: 0.32/0.64/0.96/1.28 Nm



Permanent Magnet Synchronous Variable Frequency Motor

Rated voltage: 48/220V
 Rated power: 63/126/188/251/377/502 W
 Rated speed: 1500/3000 rpm/min
 Rated torque: 0.4/0.8/1.2/1.6 Nm



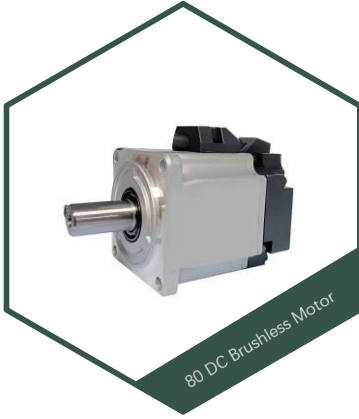
Permanent Magnet Synchronous Variable Frequency Motor

Rated voltage: 48/220V
 Rated power: 110/220/330/440/660 W
 Rated speed: 1500/3000 rpm/min
 Rated torque: 0.7/1.4/2.1 Nm



Permanent Magnet Synchronous Variable Frequency Motor

Rated voltage: 220V
 Rated power: 50 W/100 W
 Rated speed: 3000 rpm/min
 Rated torque: 0.159/0.318 Nm



Permanent Magnet Synchronous Variable Frequency Motor

Rated voltage: 220V
 Rated power: 50 W/100 W
 Rated speed: 3000 rpm/min
 Rated torque: 0.64/1.28 Nm



Permanent Magnet Synchronous Variable Frequency Motor

Rated voltage: 220V
 Rated power: 750/1000 W
 Rated speed: 2500/3000 rpm/min
 Rated torque: 2.39/3.2 Nm

Brushless Permanent Magnet Synchronous Variable Frequency Motor Driver



Permanent Magnet Synchronous Variable Frequency Motor Driver

Rated current: 8A
Voltage range: 25~36V
Position control / Speed control / Torque control / Communication control pulse / Analog / 485 /



Permanent Magnet Synchronous Variable Frequency Motor Driver

CANopen / EtherCAT Rated current: 15A
Voltage range: 20~60V
Position control / Speed control / Torque control / Communication control pulse / Analog / 485 /



Permanent Magnet Synchronous Variable Frequency Motor Driver

CANopen / EtherCAT Rated current: 25A
Voltage range: 20~72V
Position control / speed control / torque control / communication control pulse / analog / 485 / CANopen / EtherCAT



Permanent Magnet Synchronous Variable Frequency Motor Driver

Rated current: 50A
Voltage range: 20~90V
Position control / speed control / torque control / communication control pulse / analog / 485 / CANopen / EtherCAT



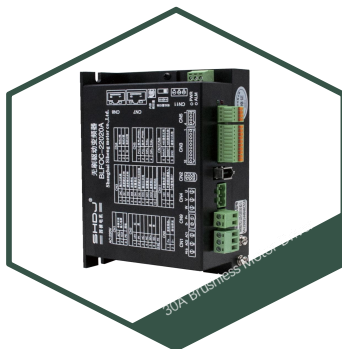
Permanent Magnet Synchronous Variable Frequency Motor Driver

Rated current: 100A
Voltage range: 20~90V
Position control / speed control / torque control / communication control pulse / analog / 485 / CANopen / EtherCAT



Permanent Magnet Synchronous Variable Frequency Motor Driver

Rated current: 20A
Voltage range: 220V
Position control / speed control / torque control / communication control pulse / analog / 485 / CANopen / EtherCAT



Permanent Magnet Synchronous Variable Frequency Motor Driver

Rated current: 30A
Voltage range: 220V
Position control / speed control / torque control / communication control pulse / analog / 485 / CANopen / EtherCAT



Permanent Magnet Synchronous Variable Frequency Motor Driver

Rated current: 50A
Voltage range: 220V
Position control / speed control / torque control / communication control pulse / analog / 485 / CANopen / EtherCAT



Permanent Magnet Synchronous Variable Frequency Motor Driver

Rated current: 35A
Voltage range: 380V
Position control / speed control / torque control / communication control pulse / analog / 485 / CANopen / EtherCAT

MD120AIS Series Integrated Servo Moving Wheel

Rubber-Coated Wheel Reducer



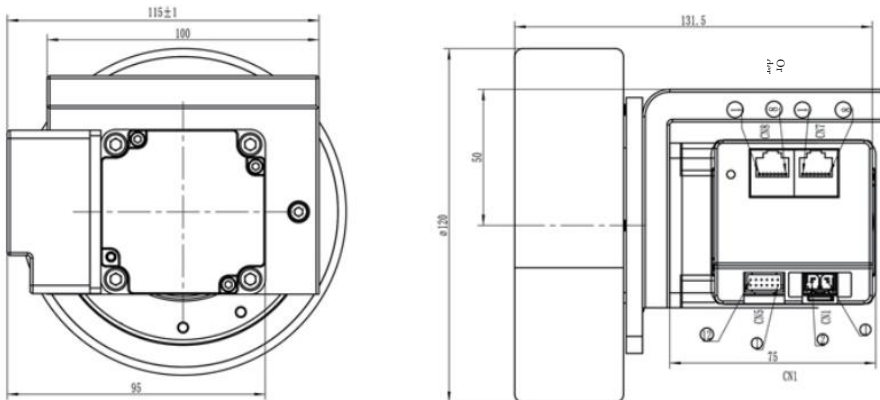
Technical Specifications

Project	Specification
Motor Model Number	MD60-48-C01330-MGS0-5-120, Multiple, Package Type
Body Dimensions (L I/YII)	Body Net Length: 75mm, With Gearbox: 131.5mm
Rated voltage	48vdc
Rated Power	400W
Rated Current	10A
Rated torque after Reduction	6.35NM
Back EMF constant	±10% 8.3
Line Resistance (Ω)	0.31
Line Inductance (mH)	0.62
Torque constant (Nm/A), Electrical time constant (ms), Pole	0.52 1.58 5

Phase	Power output	
1	Output increases by 0.1	The witty Caozi Gongli enjoys decisive thousands of users IM latitude settings
2		
3	Output feedback	
4		
8	Input 1	
5	Torque input pulse	
6	Input pulse width	
7	Input increased for extraction, cavity 1U, illumination, support for various light types and regional models, etc. Common function ... (possibly) shell parts, paired for assembly, compatible with various models	
9	Command direction positive increment	Instrument Counterbalance
10	Command direction negative increment	
11	Command pulse positive pulse	
12	Command pulse negative increment	

Mounting Dimensions / Dimensional Drawing

● 安装尺寸 Dimensional Drawing



MD165/180AIS Series Servo Integr. Moving Wheel

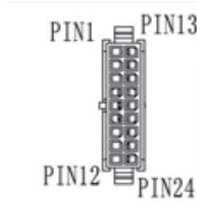
Rubber-Coated Wheel Reducer



Technical Specifications TECHNICAL SPECIFICATIONS

Motor type	MD80-C02430-MGV120-9
Body Dimensions (L mm)	Net body length 116.4mm; with reducer: 162.4mm Rated voltage
Rated Voltage	48vdc
Rated power	750
Rated current (A)	20
Rated torque (Nm)	22
Diameter (mm)	44
Rated speed (rpm)	330±10%
Rotation accuracy (°)	±10%
Winding Turns (n)	0.08::1:1 Ratio
Winding inductance (mH)	O24 mute
Torque constant (Nm/A)	0.1 and 1 (test)
Rotation direction	Sp
Electric output	Output F
Protection	IP54
Reduction ratio	1:20

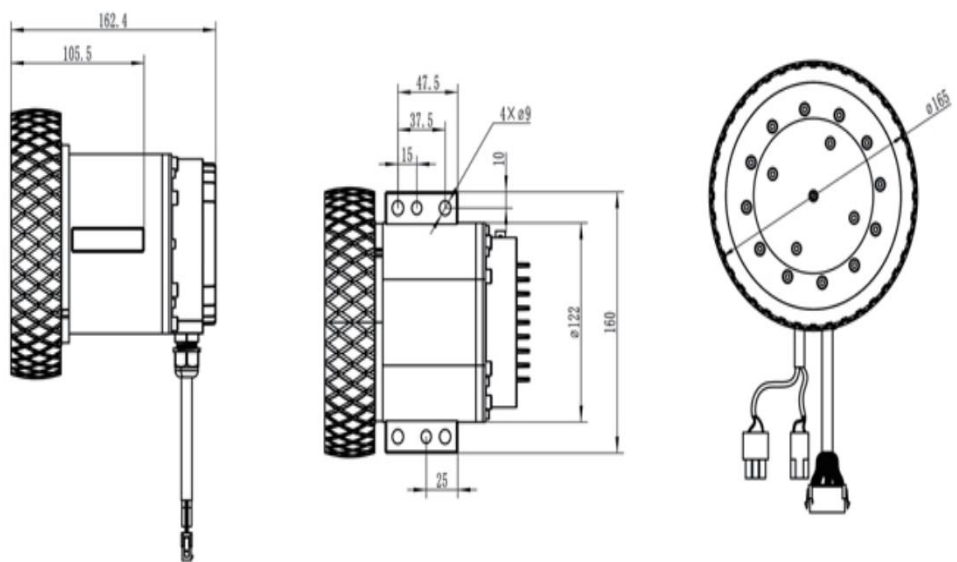
Installation Dimensions Dimensional Drawing



Specification

Pin No.	Name	Merit Scholar	Ketone Color
1	Kowtow	Logic Electric Per Input	Ji Cao 1 Point Bar
2	Mute	Logic Pan Electric Concept Input Negative	Pass Cao 2 Point Busy
3	Mute	Logic Pan electric grasping. Only in logic Baodian Ying Chun dynamic electric Ying II has loss at entry elbow-II input ground moon.	Zhou Zhang 1 Point 1
4	LOC Position-1	O Jin Jia	Cafe Li Chang
5	Mute	q or Dian	True II enemy point busy
6	Mute	O Heel Shirt	Friend II return busy
7	Dish	Jade Jia	Friend 11 Cao 3 And Busy
8	Dish	Jin Direction Positive Wall	Slot Count Ratio
9	Male	Group Lead, Order Direction Positive Increase	If Shin Lu 1 twenty Curse
10	Also	Combine Direction Negative Noise	Copy Point 1
11	Mute	X Direction Negative Increase	Output Red
12	Mute	Output Public Min	Device Remove Kowtow Yield
13	Discussion	Melancholy	
14	Dish	Mosquito Barrier	
15	Discussion	Lu Entry Association Total Increase	
16	Dish	Watch Wei	Wear Machine Harsh 1 Point Red
17	Dish	Reset	Score Qing Fragrant 2 Occupy Busy
18	Tick	Tight Horn Stop Machine	Qi 1 Point 1
19	SJ Installation	Room Whole Sparrow Start Enterprise Common Exceed	Frost Money Kowtow Point Change
20	Stol	Safety One	White Steal Broom 1 Stand Vat
21	SJ escape	Honey Whole One	White Yong Hate And Gang
22	Coffee	Manufacturer's mouth	Rated voltage 1a.
23	S Mount		Ziyong Chu and Tan

● 安装尺寸 Dimensional Drawing



Shanghai Siheng Motor Co., Ltd.

Devoted to Excellence in Intelligent Motor Control
Pioneer of Brushless DC Servo Motors and Controls

Address: Building 1, Lane 399, Songchun Road, Qingpu District,
Shanghai
Tel/whatsapp: 86-13524552693
Sales@sihengmotor.com
www.sihengmotor.com